

8 7 6 5 4 3 2 1

REVISIONS				
ZONE	LTR.	DESCRIPTION	DATE	APPROVED

NOTES UNLESS OTHERWISE SPECIFIED:

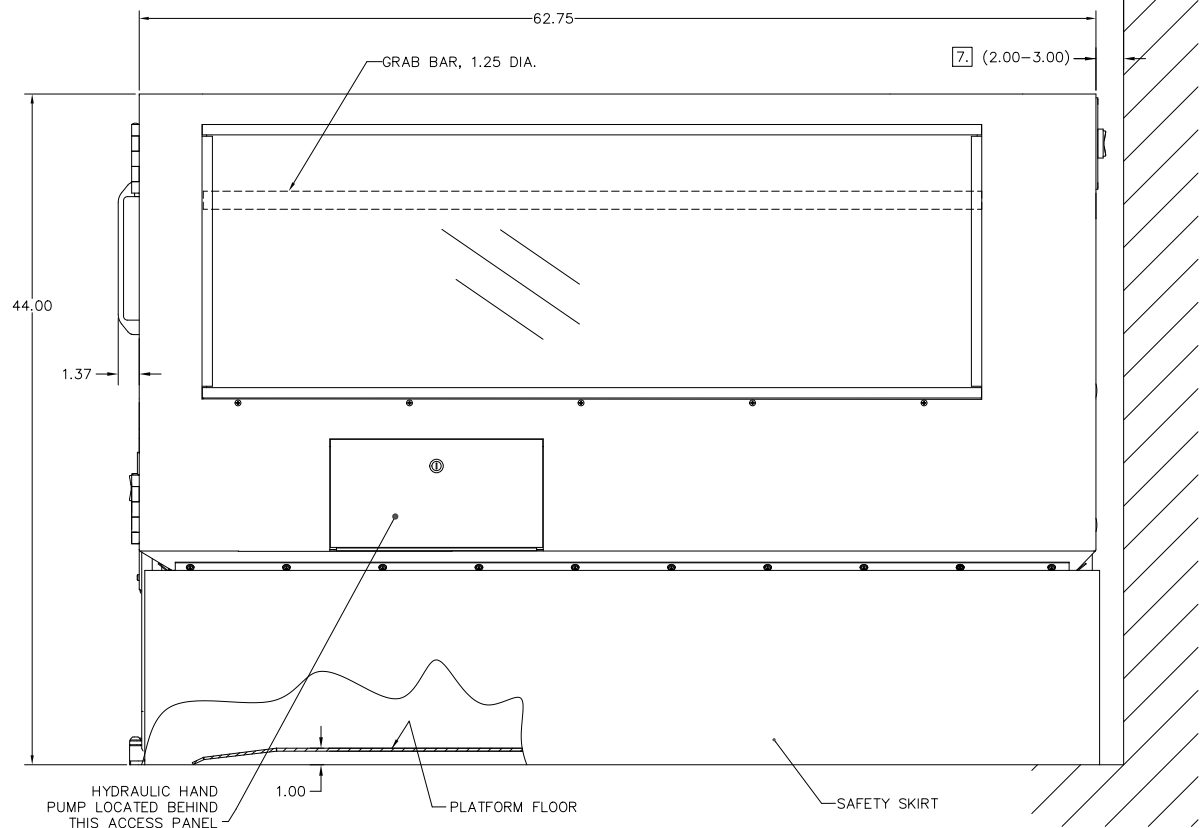
1. DESCRIPTION: PORTABLE WHEELCHAIR LIFT, MODEL VIRTUOSO 5460P.
2. CHARACTERISTICS:
 - 2.1 WEIGHT: 1025 POUNDS.
 - 2.2 MATERIALS:
 - 2.2.1 BASE, PLATFORM, GUIDE RAILS: STEEL.
 - 2.2.2 DOCK PLATE: ALUMINUM ALLOY.
 - 2.2.3 WINDOWS: TRANSPARENT HIGH IMPACT THERMOPLASTIC.
 - 2.2.4 SAFETY SKIRT: PLASTIC.
 - 2.3 FINISH:
 - 2.3.1 BASE: POWDER COATED, BLACK.
 - 2.3.2 SAFETY SKIRT: BLACK.
 - 2.3.3 PLATFORM: POWDER COATED, COLOR BLACK (-1), OR OPTIONAL COLOR (-99).
 3. OPERATION:
 - 3.1 OCCUPANCY: (1) PERSON.
 - 3.2 MAXIMUM LOAD: 750 POUNDS.
 - 3.3 AVERAGE VERTICAL SPEED: 7 FEET PER MINUTE.
 - 3.4 VERTICAL TRAVEL: 12 TO 60 INCHES.
 4. FEATURES:
 - 4.1 OPERATING MECHANISM: DIRECT-PLUNGER HYDRAULIC.
 - 4.2 UNIT IS EQUIPPED WITH REMOVABLE WHEELS.
 - 4.3 UNIT IS EQUIPPED WITH MANUAL HAND PUMP FOR EMERGENCY OPERATION AND/OR WHEEL INSTALLATION.
 - 4.4 FRONT GATE INTERLOCK PREVENTS OPENING UNLESS PLATFORM IS AT LOWER LANDING.
 - 4.5 FRONT GATE INTERLOCK PREVENTS PLATFORM FROM MOVING MORE THAN 2 INCHES FROM LOWER LANDING UNLESS FRONT GATE IS LOCKED.
 - 4.6 GATE SENSORS PREVENT OPERATION UNLESS GATES ARE CLOSED.
 - 4.7 PLATFORM FLOOR AND DOCK PLATE SURFACES ARE SLIP-RESISTANT.
 - 4.8 DOCK PLATE IS TETHERED TO BACK GATE.
 - 4.9 UNIT IS EQUIPPED WITH EMERGENCY STOP BUTTON THAT, WHEN PRESSED, STOPS OPERATION OF THE LIFT AND SOUNDS AN ALARM.
 - 4.10 THE UNDERSIDE OF THE PLATFORM IS GUARDED BY A SAFETY SKIRT THAT STOPS OPERATION OF THE LIFT WHEN DEPRESSED.
 5. ELECTRICAL:
 - 5.1 120 VAC, 60 HZ, SINGLE PHASE, 13 AMP.
 - 5.2 20' LONG POWER CORD WITH STANDARD (3) PRONG GROUNDED PLUG, GROUND FAULT CIRCUIT INTERRUPTER (GFCI), AND LOCKABLE DISCONNECT SWITCH.
 - 5.3 ALL CONTROL CIRCUITS POWERED BY 12 VDC POWER SUPPLY.
 6. UNIT MEETS APPLICABLE REQUIREMENTS OF ADAAG, ASME 17.1 1996 OR OLDER, ASME A18.1, AND ANSI A117.1, AS THEY WOULD APPLY TO A PORTABLE LIFTING DEVICE.

[7] RECOMMENDED CLEARANCES (FOR COMPLIANCE WITH ASME A18.1-2017 OR NEWER):

[7.1] WHERE STANDBY POWER OR BATTERY BACKUP IS NOT PROVIDED, 8.00" MINIMUM CLEARANCE FOR HAND PUMP ACCESS SHOULD BE PROVIDED. WHERE AN OBSTRUCTION OR SURFACE LOCATED WITHIN 12" OF PLATFORM PRESENTS A PINCHING, SHEARING, OR CRUSHING HAZARD, A SMOOTH CONTINUOUS SURFACE SHOULD BE PROVIDED EXTENDING FROM THE LOWER LANDING TO 42" MINIMUM ABOVE UPPER LANDING. MANEUVERING CLEARANCES IAW ADAAG SHOULD BE PROVIDED AT EACH LANDING FOR BOTH ENTRANCES TO THE LIFT.

FRONT END (LOWER LANDING)

BACK END (UPPER LANDING)



RIGHT SIDE POWER CORD NOT SHOWN

PART NO.	COLOR
VIRTUOSO 5460P-1	BLACK
VIRTUOSO 5460P-99	OPTIONAL

INTERPRET DIMENSIONS AND TOLERANCES IAW AND 114-04-1982 UNLESS OTHERWISE SPECIFIED DIMENSIONS ARE IN INCHES DECIMALS: XX 0.25 XXX 0.030 ANGLES: 0.5° TOLERANCES: DO NOT SCALE DRAWING FINISH: [2.3]		CONTRACT NO. DRAWN: A. GRADILLAS DATE: 3-1-06 CHECKED: E. ZUERCHER DATE: 8-18-06 APPROVED: E. ZUERCHER DATE: 8-18-06 MANUFACTURING:	CGM CONTAINER CONTROLS, INC. <small>P.O. BOX 40020 - TUCSON, ARIZONA 85717-0020</small> PORTABLE WHEELCHAIR LIFT ASSEMBLY
PART NO. [D] QTY. PER ASSY. 1 NEXT FINAL QTY. PER ASSY. 1 NEXT ASSY. APPLICATION USED ON SIMILAR TO PACT. WT. BALC. WT.	SIZE: D FSCM NO.: 08992 SCALE: 1/4 RELEASE-BAR:	DWG. NO.: VIRTUOSO 5460P REV: B SHEET: 1 OF 4	FILE VIRTUOSO 5460P

EZDMAT 9/00 8 7 6 5 4 3 2 1

8 7 6 5 4 3 2 1

REVISIONS				
ZONE	LTR.	DESCRIPTION	DATE	APPROVED

D

C

B

A

D

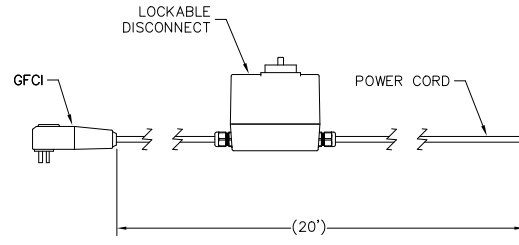
C

B

A

(64.75)

48.25



2X 3.00 MAX



FIXED CASTER



SWIVEL CASTER

ELECTRICAL CONTROLS LOCATED BEHIND THIS ACCESS PANEL

LEFT SIDE

SIZE D	FSCM NO. 08992	DWG. NO. VIRTUOSO 5460P	REV B
SCALE 1/4	RELEASE DATE	SHEET 2	FILE VIRTUOSO 5460P

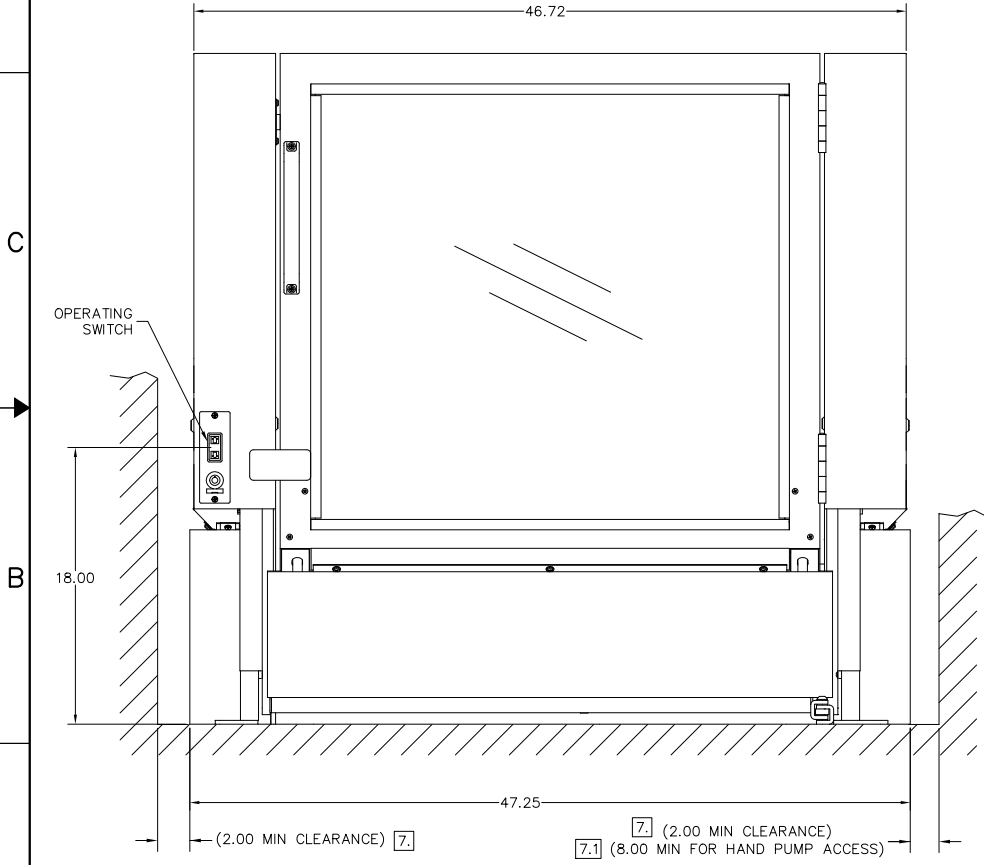
DMAT 2/91 8 7 6 5 4 3 2 1

8 7 6 5 4 3 2 1

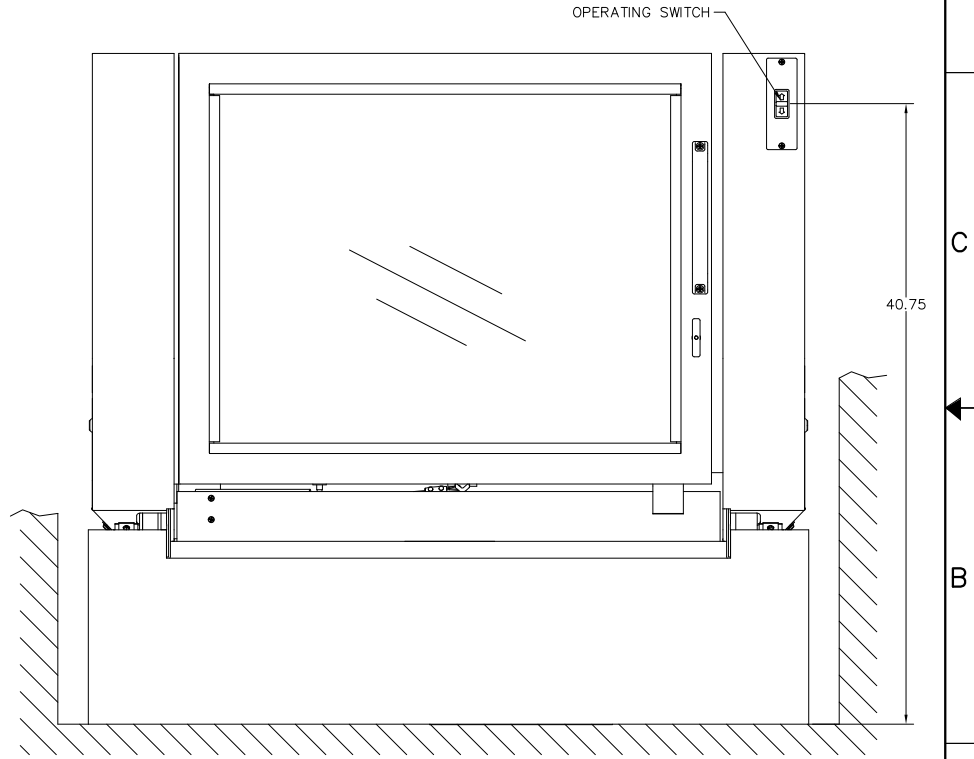
REVISIONS				
ZONE	LTR.	DESCRIPTION	DATE	APPROVED

D
C
B
A

D
C
B
A



FRONT END



BACK END
POWER CORD NOT SHOWN

DMAT 2/91 8 7 6 5 4 3 2 1 FILE VIRTUOSO 5460P

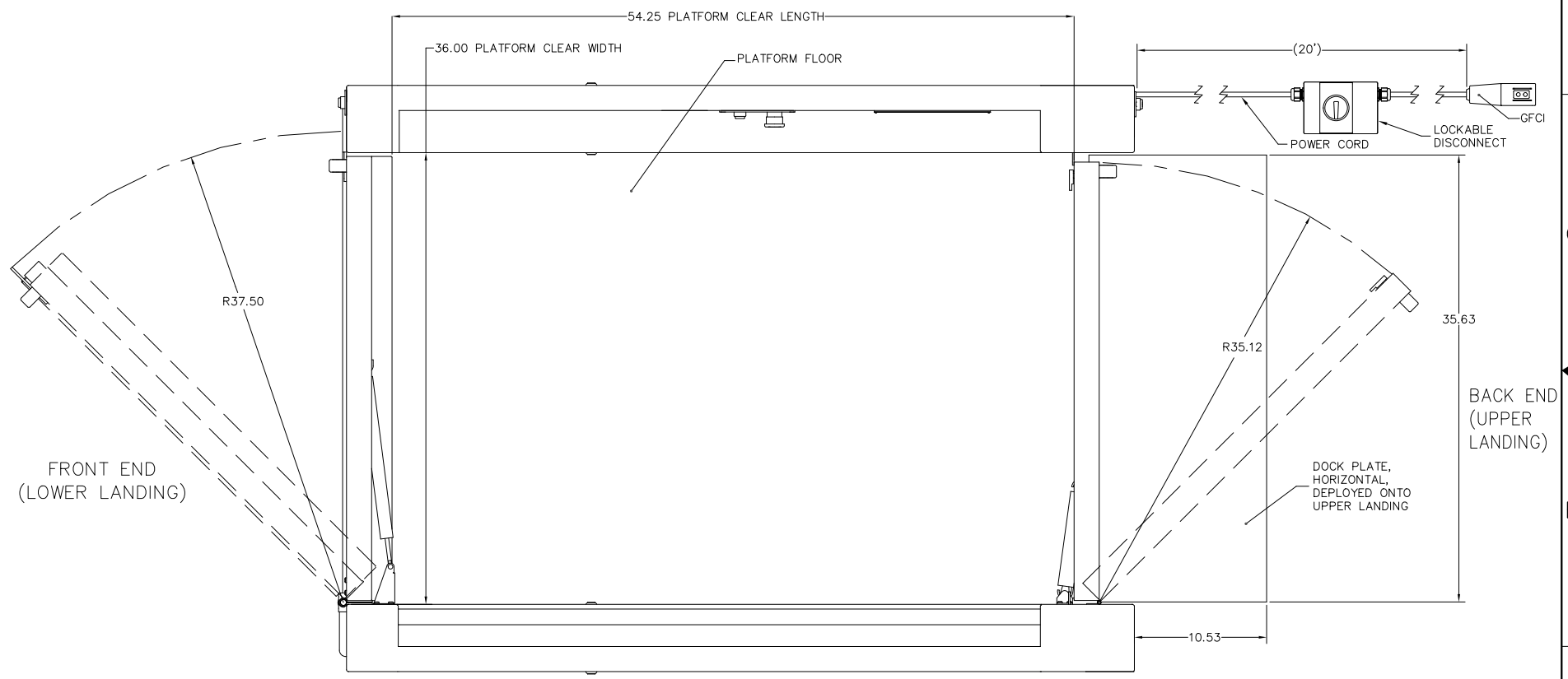
SIZE	FSCM NO.	DWG. NO.	REV.
D	08992	VIRTUOSO 5460P	B
SCALE	1/4	RELEASE DATE	SHEET 3

8 7 6 5 4 3 2 1

REVISIONS				
ZONE	LTR.	DESCRIPTION	DATE	APPROVED

D
C
B
A

D
C
B
A



TOP VIEW

8 7 6 5 4 3 2 1

SIZE	FSCM NO.	DWG. NO.	REV.
D	08992	VIRTUOSO 5460P	B
SCALE	1/4	RELEASE DATE	SHEET 4

DMAT 2/91

FILE VIRTUOSO 5460P