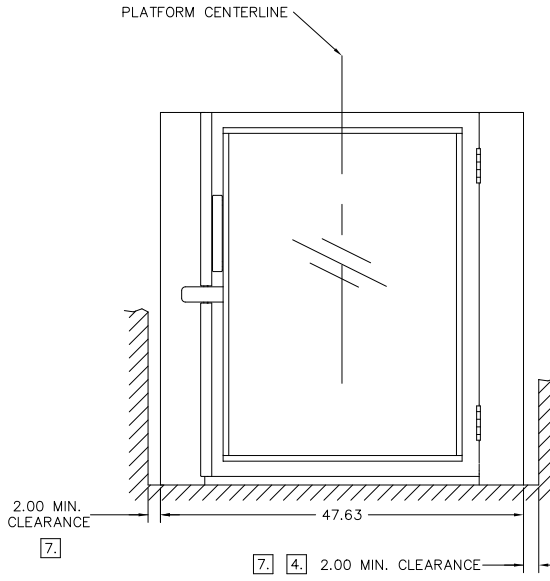


8 7 6 5 4 3 2 1

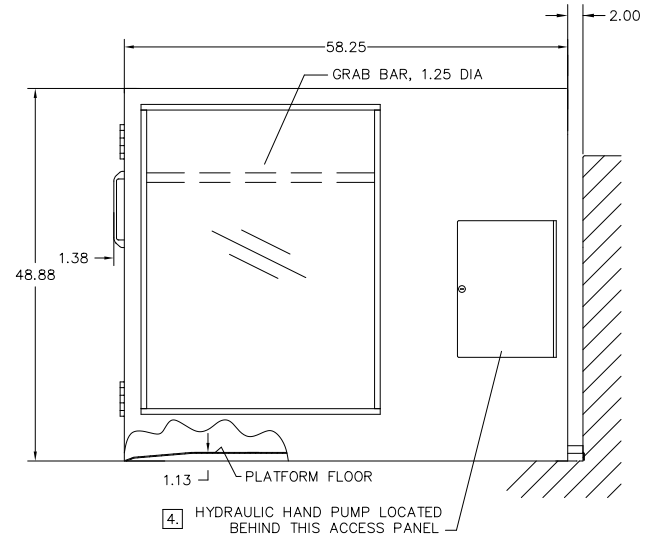
| REVISIONS |      |             |      |          |
|-----------|------|-------------|------|----------|
| ZONE      | LTR. | DESCRIPTION | DATE | APPROVED |
|           |      |             |      |          |

NOTES UNLESS OTHERWISE SPECIFIED:

1. DESCRIPTION: ASCENSION PROTEGE 5442F MODEL SERIES VERTICAL WHEELCHAIR LIFT. STANDARD COLOR BLACK.
2. ELECTRICAL & CONTROLS:  
2.1 120 VAC, 60 HZ, SINGLE PHASE, 15 AMP MINIMUM SERVICE LINE.  
2.2 LANDING OPERATING CONTROLS PROVIDED IN 1.88" DEEP SINGLE GANG HANDY BOX FOR REMOTE MOUNTING.  
2.3 ALL CONTROL CIRCUITS POWERED BY 24 VDC POWER SUPPLY.
3. LIGHTING: STANDARD AND EMERGENCY LIGHTING TO BE PROVIDED BY OTHERS.
4. (SHEETS 1 & 3) INDICATED MINIMUM CLEARANCE (ON RIGHT SIDE ONLY) SHALL BE INCREASED TO 13.00" FOR HAND PUMP ACCESS WHERE STANDBY POWER OR BATTERY BACKUP IS NOT PROVIDED, AND FOR ALL INSTALLATIONS IN CALIFORNIA.
5. REINFORCED CONCRETE SLAB REQUIRED, 4" THICK, 3500 PSI, FLAT AND LEVEL WITHIN 1/2".
6. ANCHORS TO BE PROVIDED BY INSTALLER.
7. WHERE AN OBSTRUCTION OR SURFACE LOCATED WITHIN 12" OF PLATFORM PRESENTS A PINCHING, SHEARING, OR CRUSHING HAZARD, A SMOOTH CONTINUOUS SURFACE SHALL BE PROVIDED EXTENDING FROM LOWER LANDING TO 42" MINIMUM ABOVE UPPER LANDING.
8. (SHEETS 1 & 2) STANDARD GATE HINGING SHOWN; MIRROR GATES AND GATE DIMENSIONS ABOUT PLATFORM CENTERLINE AS NECESSARY FOR OTHER HINGE CONFIGURATIONS.



FRONT END ELEVATION [8]



RIGHT SIDE ELEVATION

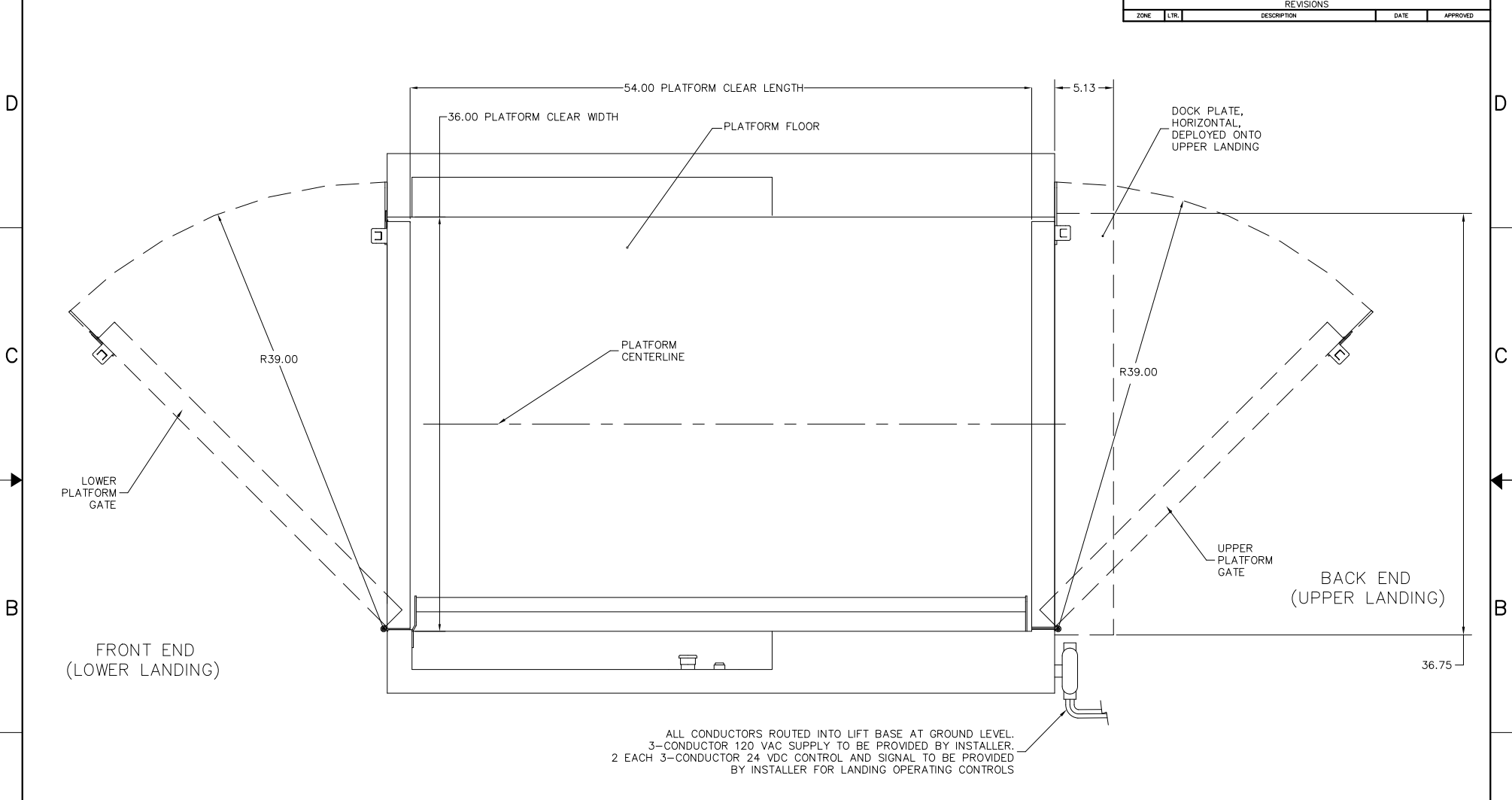
SEE SHEET 3

ASCENSION P/N: \_\_\_\_\_

|  |  |                                |  |                     |  |  |  |
|--|--|--------------------------------|--|---------------------|--|--|--|
| INTERPRET DIMENSIONS AND TOLERANCES IN INCHES<br>UNLESS OTHERWISE SPECIFIED DIMENSIONS ARE IN INCHES<br>TOLERANCES: DECIMALS .XX ±.25 .XXX ±.030 ANGLES 2.5° |  | CONTRACT DATE 10-11-11         |  | DRAWN B. KOOMAR     |  | TITLE PROTEGE 5442F MODEL SERIES WHEELCHAIR LIFT |  |
| DO NOT SCALE DRAWING   |  | CHECKED P. BROBECK             |  | APPROVED P. BROBECK |  | FSCM NO. 08992                                   |  |
| PART NO.   |  | NEXT FINAL QTY. REQD PER ASSY. |  | NEXT ASSY. USED ON  |  | DWG. NO. PROTEGE 5442F                           |  |
| APPLICATION  |  | SIMILAR TO                     |  | FACT. WT. CALC. WT. |  | SCALE 1/8" = 1'-0"                               |  |
|  |  |                                |  |                     |  | SHEET 1 OF 3                                     |  |

8 7 6 5 4 3 2 1

| REVISIONS |      |             |      |          |
|-----------|------|-------------|------|----------|
| ZONE      | LTR. | DESCRIPTION | DATE | APPROVED |
|           |      |             |      |          |



ALL CONDUCTORS ROUTED INTO LIFT BASE AT GROUND LEVEL.  
 3-CONDUCTOR 120 VAC SUPPLY TO BE PROVIDED BY INSTALLER.  
 2 EACH 3-CONDUCTOR 24 VDC CONTROL AND SIGNAL TO BE PROVIDED  
 BY INSTALLER FOR LANDING OPERATING CONTROLS

PLAN VIEW

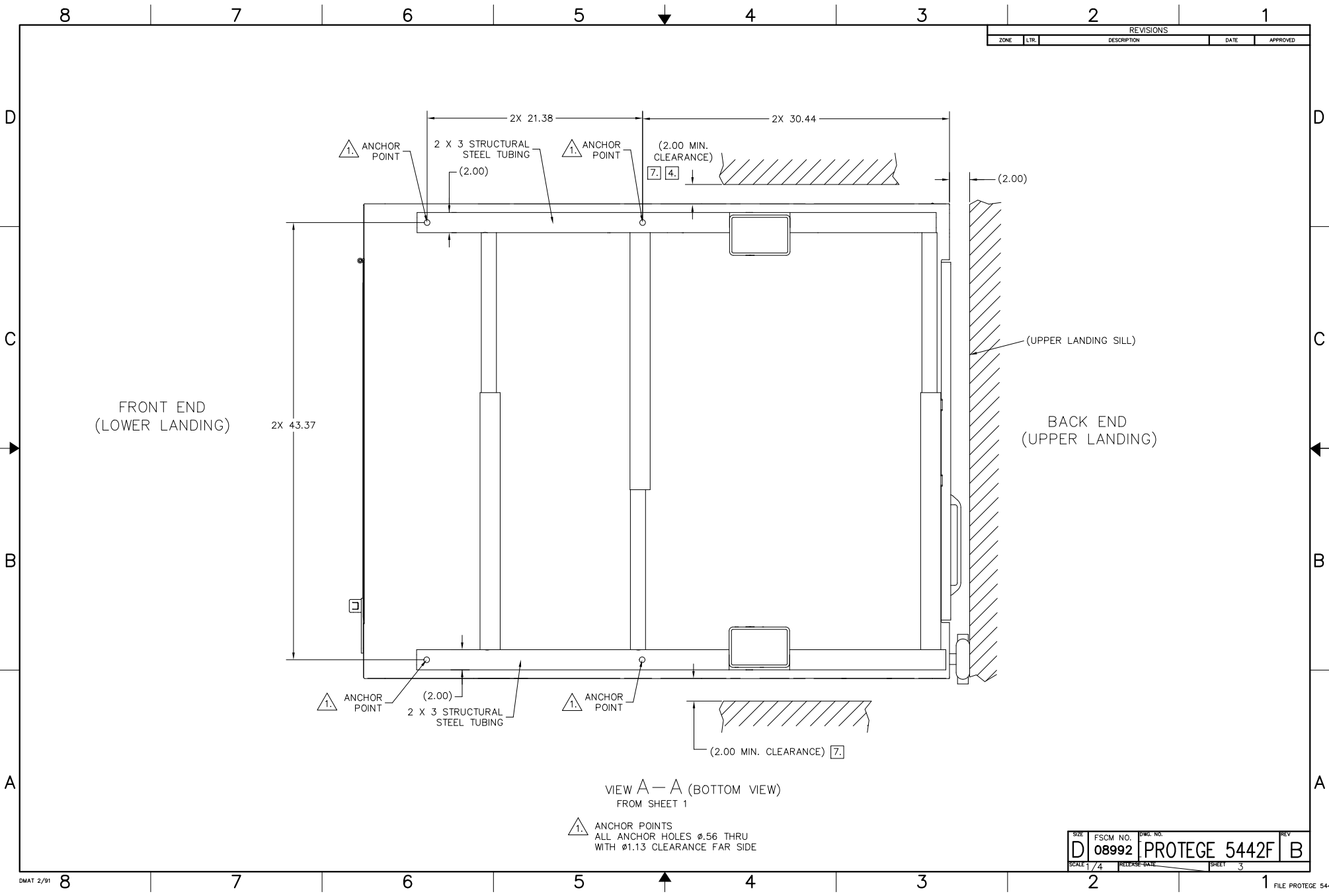
GATE HINGE CONFIGURATIONS: **8**

- 1. STANDARD GATE HINGING: ALL GATES AS SHOWN.
- 2. OPPOSITE-HINGED LOWER PLATFORM GATE: MIRROR LOWER PLATFORM GATE ABOUT PLATFORM CENTERLINE.
- 3. OPPOSITE-HINGED UPPER PLATFORM GATE: MIRROR UPPER PLATFORM GATE ABOUT PLATFORM CENTERLINE.
- 4. ALL GATES OPPOSITE HINGED: MIRROR ALL GATES ABOUT PLATFORM CENTERLINE.

|           |              |               |                    |
|-----------|--------------|---------------|--------------------|
| SIZE      | FSCM NO.     | DWG. NO.      | REV                |
| D         | 08992        | PROTEGE 5442F | B                  |
| SCALE 1/4 | RELEASE DATE | SHEET 2       | FILE PROTEGE 5442F |

DMAT 2/91 8 7 6 5 4 3 2 1

| REVISIONS |      |             |      |          |
|-----------|------|-------------|------|----------|
| ZONE      | LTR. | DESCRIPTION | DATE | APPROVED |
|           |      |             |      |          |



|       |              |               |               |
|-------|--------------|---------------|---------------|
| SIZE  | FSCM NO.     | DWG. NO.      | REV           |
| D     | 08992        | PROTEGE 5442F | B             |
| SCALE | RELEASE-BANK | SHEET         | FILE          |
| 1/4   |              | 3             | PROTEGE 5442F |