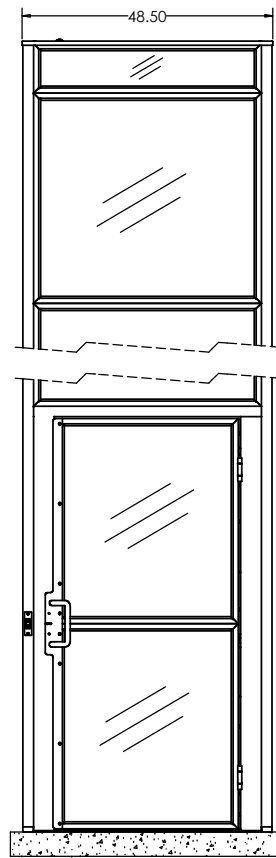
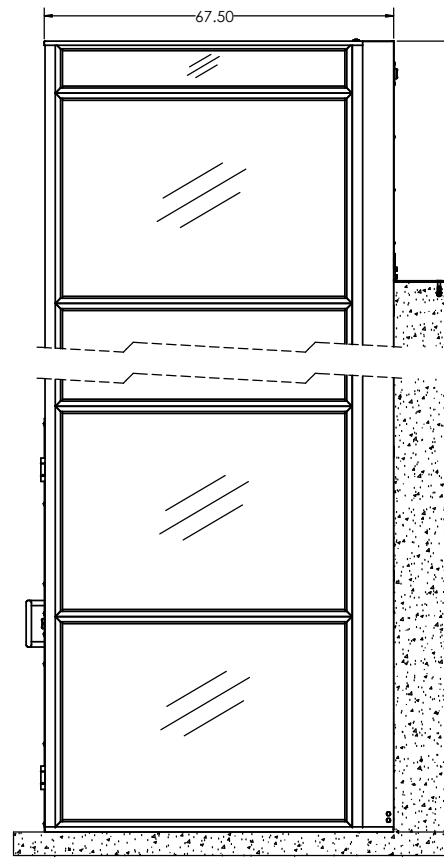


ASCENSION CLARITY MODEL SERIES VERTICAL PLATFORM  
WHEELCHAIR LIFT WITH RUNWAY ENCLOSURE

1. CODE COMPLIANCE: ASME A18.1, ASME A17.5, ANSI A117.1, ADAAG, NFPA 70 (NEC).
2. RATINGS
  - 2.1 CAPACITY: 750 LB
  - 2.2 SPEED: 20 FT/MIN
  - 2.3 DUTY: 168 CYCLE-FT/HOUR (12 CYCLES/HOUR MINIMUM).
  - 2.4 TRAVEL: 34.00 TO 168.00 AS ALLOWED BY AHJ.
3. DRIVE & ELECTRICAL
  - 3.1 DRIVE TYPE: 2:1 CHAIN HYDRAULIC
  - 3.2 SUSPENSION: 4X #50 ANSI ROLLER CHAINS
  - 3.3 MOTOR: 24VDC, 3 HP
  - 3.4 120VAC, 60 HZ, 10A, 1-PHASE.
  - 3.5 ALL CONTROL CIRCUITS 24VDC.
  - 3.6 BATTERY BACKUP PROVIDED STANDARD.
  - 3.7 **MANUAL LOWERING PULL HANDLE WITH ACCESS LOCK PROVIDED STANDARD AT UPPER LANDING.**
4. SITE CONSIDERATIONS
  - 4.1 DO NOT PROVIDE PIT OR RAMP. LOW-PROFILE PLATFORM FLOOR MEETS ADA REQUIREMENTS AS ENTRY THRESHOLD.
  - 4.2 UPPER LANDING PLATE, .25 THICK, ANCHORS TO TOP OF UPPER LANDING FLOOR SURFACE.
  - 4.3 REFER TO ASCENSION CLARITY STRUCTURAL LOADING DOCUMENT FOR STRUCTURAL AND ANCHORING REQUIREMENTS.
5. LIGHTING
  - 5.1 PRIMARY LIGHTING TO BE PROVIDED BY OTHERS IN ACCORDANCE WITH ALL APPLICABLE CODES AND REGULATIONS.
  - 5.2 ACCENT AND AUXILIARY LIGHTING PROVIDED STANDARD ON PLATFORM CONTROLS AND FLOOR.
6. ALTERNATE GATE HINGING AVAILABLE. CONTACT ASCENSION FOR PROJECT-SPECIFIC DRAWINGS.

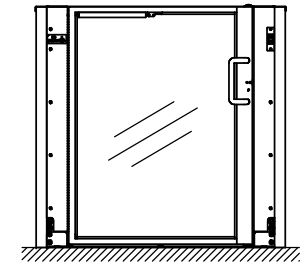


FRONT VIEW

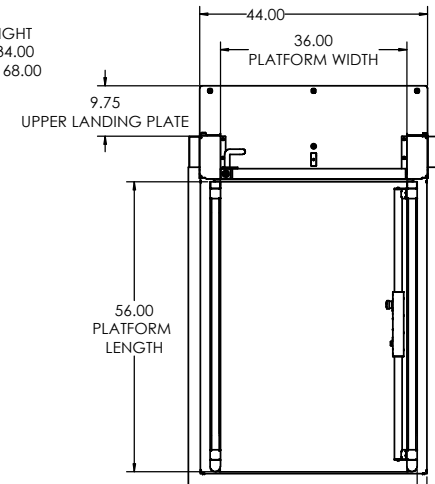


SIDE VIEW

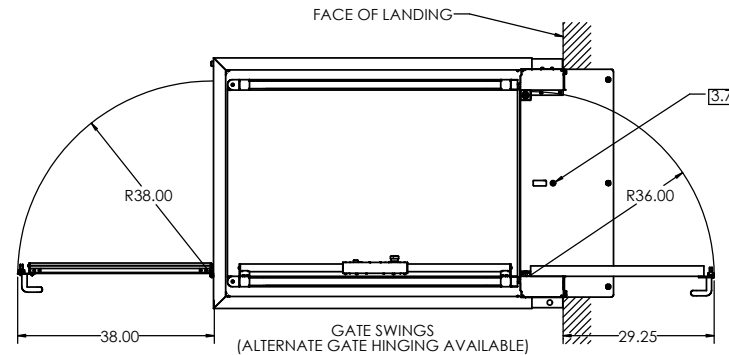
LIFTING HEIGHT  
MINIMUM 34.00  
MAXIMUM 168.00



SECTION A-A  
VIEW FROM UPPER LANDING



TOP VIEW



GATE SWINGS  
(ALTERNATE GATE HINGING AVAILABLE)

INTERPRET DIMENSIONAL AND TOLERANCES PER ANSI Y14.5M-1994		DATE		P.O. BOX 4000 TUCSON, ARIZONA 85717-0000	
UNLESS OTHERWISE SPECIFIED DIMENSIONS ARE IN INCHES (MM) TOLERANCES ANGLES ± .4°		2-1-16		<b>ASCENSION®</b>	
DECIMALS .001 ± .002 .0004 ± .0025					
DO NOT SCALE DRAWING.		DRAWN	DATE	<b>CLARITY™ VERTICAL PLATFORM LIFT WITH RUNWAY ENCLOSURE</b>	
		P. BROBECK	2-1-16		
		CHECK	DATE	FSCM NO. <b>08992</b> DWG. NO. <b>CLARITY 16E</b>	
		E. ZUERCHER	3-31-16		
		APPROVED	DATE	SCALE 1/1 SHEET 1 OF 1	
		E. ZUERCHER	3-31-16		